

Assembly Instruction



1

① x2
② x2
③

S2*1
②
①
x2

The rear of the motor is facing the center

③
S2*6

6mm S1*1
M8*16 S2*8

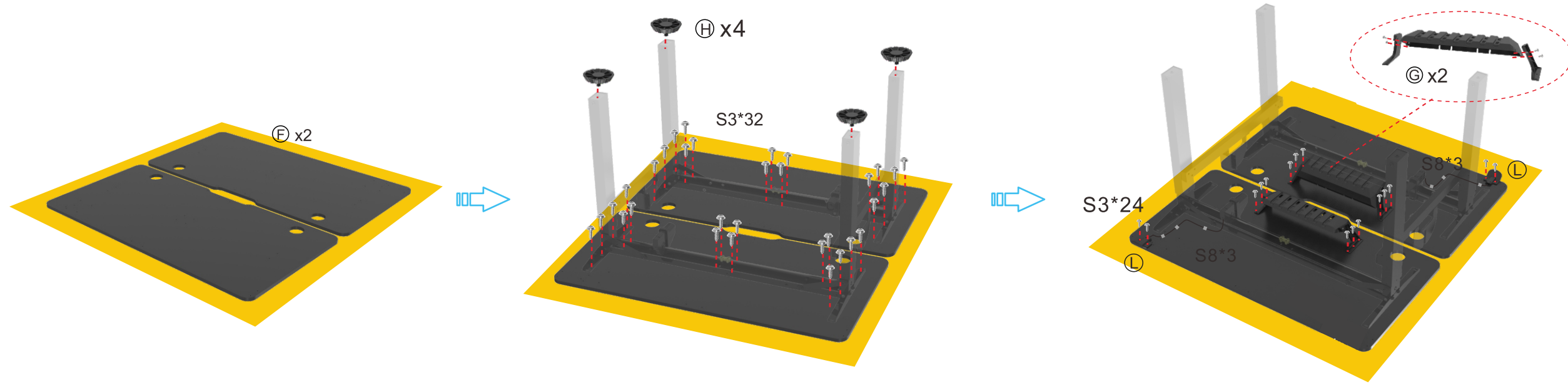
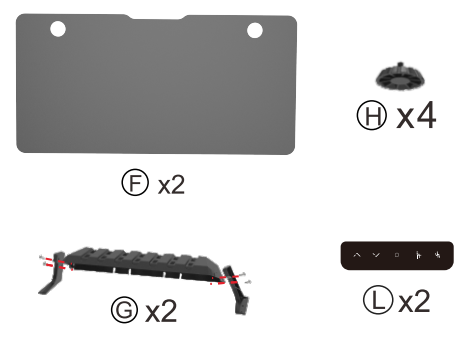
2

③
④ x2
⑤ x4

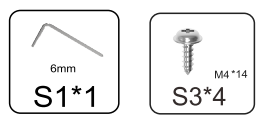
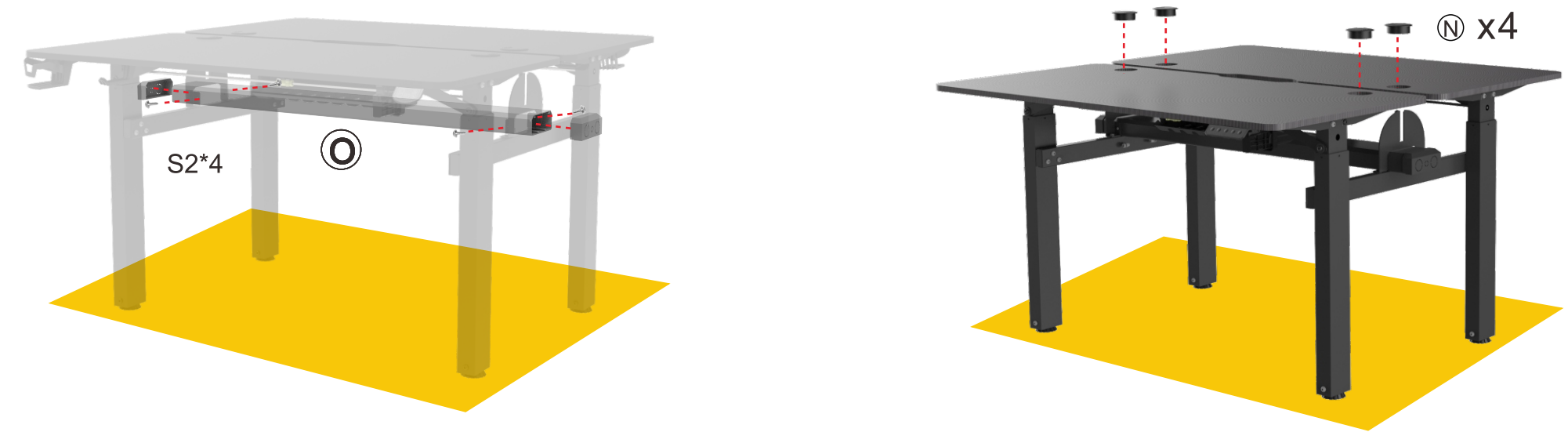
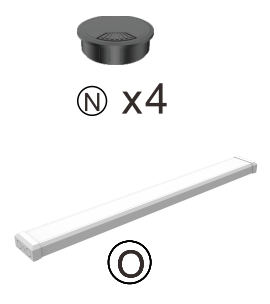
③
S2*6
④
S2*4
⑤
S2*8
⑤

6mm S1*1
M8*16 S2*18

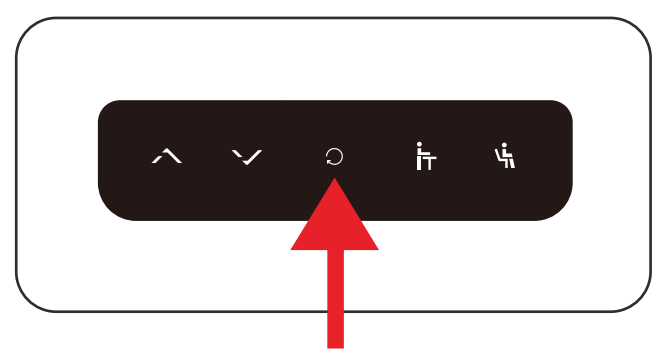
3



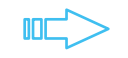
4



5



After the table is installed, please press the  key to start



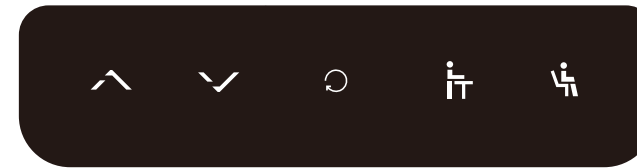
The table will automatically drop to the lowest point, stay for 3 seconds, then rise to the highest point, and finally return to the initial position - successful installation

Instruction Manual

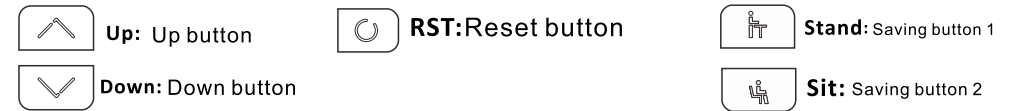


Notes:

1. Operating voltage: AC100~240V, frequency 50/60HZ
2. Operating temperature: -10~40°C.
3. Before use, please check whether all power lines are fully connected and firm.
4. Before use, please check the surrounding environment and ensure there are no obstructions above or below the table.
5. This product is not to be used by children. Adult supervision is required.
6. Do not use if any cables (electrical parts) are damaged.
7. The product is not suitable for mobile use. If you must move, please prevent it from being injured.
8. It is normal for a slight jitter when the table starts to rise and fall. This will not affect the service life.



Key introduction



Up and down button operation

- ◆ When the "⬆" button is pressed, the desktop runs up until reaching the highest height.
- ◆ When the "⬇" button is pressed, the desktop runs down until it reaches the lowest height.
- ◆ When press the "⬆" or "⬇" button, the desktop runs automatically.
- ◆ When press the "⬆" button 3S , release the button, automatically reach the highest height, press any button can stop halfway.
- ◆ When press the "⬇" button 3S , release the button, automatically reach the highest height, press any button can stop halfway.

Location Store/Memory Location operation

- ◆ Storage of standing position: press and hold "🧑" button for 5 seconds, and the standing position is saved
- ◆ Storage of sitting position: press and hold "🧑" button for 5 seconds, and the sitting position is saved
- ◆ Stand memory position operation: press the "🧑" button, the desktop automatically run to the height of the memory position, and press any button can stop halfway.
- ◆ Sitting memory position operation: press the "🧑" button, the desktop automatically run to the height of the memory position, and press any button can stop halfway.

Reset Operation:

- ◆ Press and hold "🔄" for 3 seconds, then release the button to enter reset mode. The desktop automatically down to find the lowest height, then after a 3-second pause, the desktop automatically moves up to find the highest height, pause for another 3 seconds. In the end, the desktop will automatically run down to the fixed position, and the reset process is over.

After the Installation of desk, pls execute this process first.